



# Horizon School Division

## 2016-2017 Annual Education Results Report & 2017-2020 Three Year Education Plan

# SUMMARY

The Accountability Pillar shows our District's progress on a variety of measures monitored by Alberta Education.

A  
c  
h  
i  
e  
v  
e  
m  
e  
n  
t

I  
m  
p  
r  
o  
v  
e  
m  
e  
n  
t

Safe and Caring	■	■
Program of Studies	■	■
Education Quality	■	■
Drop Out Rate	■	■
High School Completion (3 Years)	■	■
PAT Acceptable	■	■
PAT Excellence	■	■
Diploma Acceptable	■	■
Diploma Excellence	■	■
Diploma Exam Participation Rate (4+ Exams)	■	■
Rutherford Scholarship Eligibility Rate	■	■
Transition Rate (6 Years)	■	■
Work Preparation	■	■
Citizenship	■	■
Parental Involvement	■	■
School Improvement	■	■

Very High/Improved Significantly
High/Improved
Intermediate/Maintained
Low/Declined
Very Low/Declined Significantly

*Welcome* Horizon School Division is an inclusive learning community that engages and empowers all learners for success.

### Quick Facts

- 3,500 students
- 40% English Language Learners
- 500 dedicated staff serving our students
- 15 regular schools,
- 1 Christian Alternative School
- 4 outreach schools,
- 19 Hutterian Brethren schools,
- 1 Sports Academy

### Cross-curricular COMPETENCIES

- Literacy and Numeracy
- Critical thinking
- Communication
- Problem Solving
- Collaboration
- Managing information
- Cultural and global citizenship
- Creativity and innovation
- Personal growth and well-being

*Passionately engaging learners who confidently pursue continual improvement now and in the future as contributing global citizens*



## OUR CHALLENGE

- Ensuring all students residing within our jurisdiction receive a high quality education

## OUR ACCOMPLISHMENTS

All learners leaving school are contributing global citizens. (3 yr averages)

- Excellence in Student Learning: 89.8% of students meet acceptable standard on diploma examinations (6.8% above provincial average).
- High School Completion: high school completion rate is 83.2% (5.3% above the provincial average).
- High Quality Safe Learning Environments: 93.5% of stakeholders believe schools are safe and caring (4.0% above provincial average).
- Life Long Learning and Citizenship: 88.7% of stakeholders felt students exhibited the characteristics of good citizens (5.0 % above provincial average)
- Continuous Improvement: 86.7% of stakeholders felt schools are improving (7.4% above provincial average)
- High Stakeholder Support: 88.4% of parents feel they have opportunities to be involved (7.0% above provincial average)

## ENGAGING OUR STAFF

- Strong core instruction that develops student competencies (Ministerial Order #001/2013).

## MEETING THE NEEDS OF OUR STUDENTS

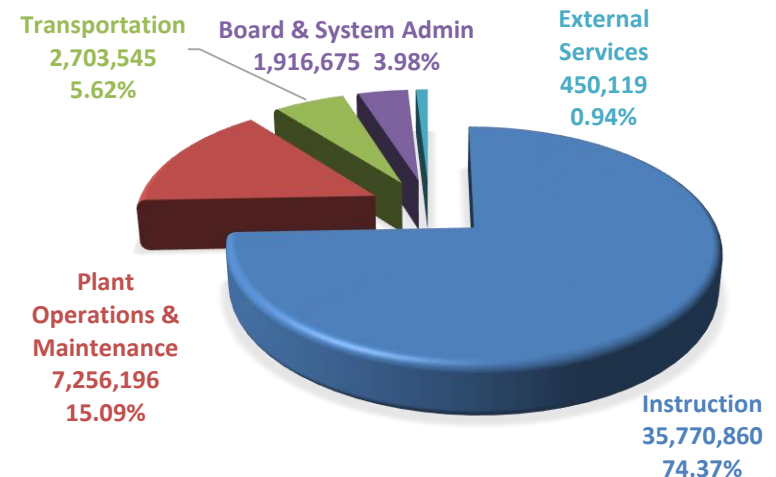
- Employ a Response to Instruction and Intervention Framework to meet the needs of all students.

## ENGAGING OUR COMMUNITY

- Student success is a collective endeavor.
- Parents continue to be engaged via participation in jurisdiction committees (e.g. policy and budget).
- Parents and the community are also informed via social media and regular newspaper articles

## STEWARDSHIP OF RESOURCES

- The cost of educating our students in 2016-17 was \$48,097,395. 74.37% (\$35,770,860) of total funds was spent directly on student instruction. The single largest expenditure was for staff salaries and benefits which accounted for 70.86% of the budget.



6302 - 56 Street | Taber, AB T1G 1Z9 | 403.223.3547

More detailed information can be obtained by contacting Wilco Tymensen (Superintendent) at 403-223-3547 or visiting <http://horizon.ab.ca/documents/general/2017-2020EdPlanAERR.pdf> <http://horizon.ab.ca/documents/general/2016-2017AuditedFinancialStatements.pdf>, or <http://horizon.ab.ca/documents/general/2017-2018BudgetUpdate.pdf>