

The Accountability Pillar shows our District's progress on a variety of measures monitored by Alberta Education.

A  
c  
h  
i  
e  
v  
e  
m  
e  
n  
t

I  
m  
p  
r  
o  
v  
e  
m  
e  
n  
t

Safe and Caring	■	■
Program of Studies	■	■
Education Quality	■	■
Drop Out Rate	■	■
High School Completion (3 Years)	■	■
PAT Acceptable	■	■
PAT Excellence	■	■
Diploma Acceptable	■	■
Diploma Excellence	■	■
Diploma Exam Participation Rate (4+ Exams)	■	■
Rutherford Scholarship Eligibility Rate	■	■
Transition Rate (6 Years)	■	■
Work Preparation	■	■
Citizenship	■	■
Parental Involvement	■	■
School Improvement	■	■

Very High/Improved Significantly

High/Improved

Intermediate/Maintained

Low/Declined

Very Low/Declined Significantly

*Welcome Horizon School Division is an inclusive learning community that engages and empowers all learners for success.*

### Quick Facts

- 3,500 students
- 40% English Language Learners
- 450 dedicated staff serving our students
- 15 regular schools,
- 2 Christian Alternative School
- 3 outreach schools,
- 19 Hutterian Brethren schools,
- 1 Sports Academy

### Cross-curricular **COMPETENCIES**

- Literacy and Numeracy
- Critical thinking
- Communication
- Problem Solving
- Collaboration
- Managing information
- Cultural and global citizenship
- Creativity and innovation
- Personal growth and well-being

*Passionately engaging learners who confidently pursue continual improvement now and in the future as contributing global citizens*



## OUR CHALLENGE

- Ensuring all students residing within our jurisdiction receive a high quality education

## OUR ACCOMPLISHMENTS

*(The comparison below is to previous 3 year averages)*

**All learners leaving school are contributing global citizens.**

- Excellence in Student Learning: 90.5% of students meet acceptable standard on diploma examinations (7.4% above provincial average).
- High School Completion: high school completion rate is 82.6% (4.2% above the provincial average).
- High Quality Safe Learning Environments: 93.5% of stakeholders believe schools are safe and caring (4.3% above provincial average).
- Life Long Learning and Citizenship: 88.9% of stakeholders felt students exhibited the characteristics of good citizens (5.7% above provincial average)
- Continuous Improvement: 86.8% of stakeholders felt schools are improving (5.8% above provincial average)
- High Stakeholder Support: 86.3% of parents feel they have opportunities to be involved (5.4% above provincial average)

## ENGAGING OUR STAFF

- Strong core instruction that develops student competencies (Ministerial Order #028/2020).

## MEETING THE NEEDS OF OUR STUDENTS

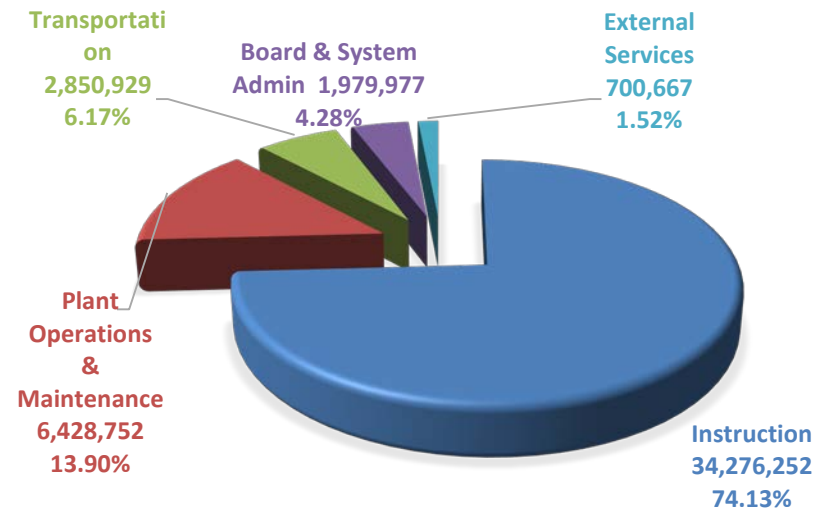
- Employ a Response to Intervention Framework to meet the needs of all students.

## ENGAGING OUR COMMUNITY

- Student success is a collective endeavor.
- Parents continue to be engaged via participation in jurisdiction committees (e.g. policy and budget).
- Parents and the community are also informed via websites, social, and regular media

## STEWARDSHIP OF RESOURCES

- The cost of educating our students in 2019-20 was **\$44,306,171**. **75.11% (\$35,391,046)** of total funds was spent directly on student instruction. The single largest expenditure was for staff salaries and benefits which accounted for **69.85%** of the budget.



6302 - 56 Street | Taber, AB T1G 1Z9 | 403.223.3547

More detailed information can be obtained by contacting Dr. Wilco Tymensen (Superintendent) at 403-223-3547 or visiting

Three Year Education Plan <https://www.horizon.ab.ca/download/223272>

Audited Financial Statement <https://www.horizon.ab.ca/download/223242>, or

Budget <https://www.horizon.ab.ca/download/301117>